

**Specifications**

Capacity – dry weight, cotton up to	60 kg
Batch diameter (nominal)	940mm
Cycle time min.	120 sec.
Moisture retention (DIN 11901) as per operation conditions	38 – 44%
Electric connected load 19.7 kW	consumption approx. 14.8 kWh
Cooling water, utilized in the batch washer	approx. 580 l/h
Compressed air: 6 bar	suction capacity approx. 2l/shift
Entrance dimensions, machine laid flat, hydraulics not disconnected (without oil)	W=2000mm, H=2400mm
Operational dimensions	length 2360mm, width 1960mm, height 3860 mm
Operational weight	approx. 12000 kg
Transport weight	gross 12100 kg

**Application**

The **Lavapress LP 581** is a single stage press for cyclic extraction of processed laundry batches  
Consisting of 0-60 kg dry weight, transferred from the batch washer.

**Extraction**

Effected even and conservative by means of controlled pressure build - up via a pressure pad  
Mounted to the press stamp containing a constant water filling.

**Standard version**

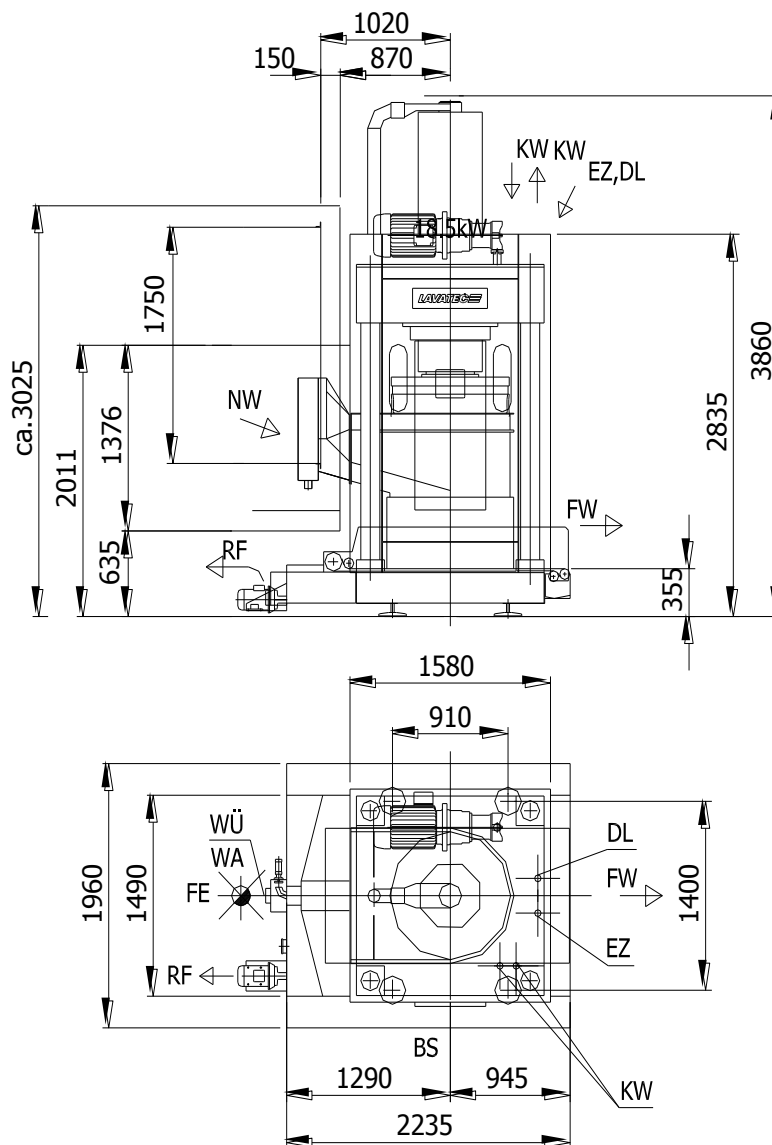
Solid steel design by means of a closed unit consisting of a base section, columns and head section.  
Oil hydraulic with oil cooling and 300 liter filling  
Pressure set up to 60 bar  
Proportional pressure control  
1 replacement pressure pad  
In line, respective angle positioning optional  
Chute for **Lavatec** batch washer  
Electric supply: 3/N~50Hz, 400/300V  
Micro processor control with function monitoring and manual control.  
Laundry contact only with stainless steel parts.  
Machine panelling made of stainless steel, wire-brushed-finish.  
Large maintenance doors on two sides of machine.  
Large dimensioned water collection-tank with pump device and drain connection.  
Transport conveyor with drainage plate for safe batch transport from the press.  
Pedestal for height adjustment.  
Cooling water valve.  
Machine equipped in accordance with relevant safety standards.

**Special version**

Chutes for selected batch washers, respective special positioning.  
Conveyor extension + 480mm.  
Conveyor – special length compensation by intermediate conveyor.  
Electric: special voltage, special frequency, CSA-, Nema/UL-regulation.  
Visual alarm  
Interface for operation data recording  
Additional pressure pad  
Water flow pump instead of emersion pump for water return into tunnel washer  
Disinfection – DHSS (prepared) automatic disinfection of transport conveyor  
Embedded in disinfection of tunnel washer by means of hot water  
Disinfection – complete with tank, independent chemical disinfection

**Accessories**

Transport units for batch transfer



NW = nasse Ware  
wet linen

Linge mouillée

FW = feuchte Ware  
moist linen

Linge humide

EZ = Elektro-Zuleitung  
electric supply

Arrivée électrique

RF = Rückflotte zu Waschmasch. DN50  
water recovery DN50  
Branchement de refoulement DN50

DL = Druckluft DN 6  
compressed air DN 6  
Air comprimé DN 6

WO = Wasserüberlauf DN100  
water overflow DN100  
Débordement d'eau DN100

WA = Wasserablauf DN100  
water drainage DN100  
vidange DN100

BS = Bedienseite  
service side  
Côté de commande

FE = Fußbodenentwässerung  
floor drain  
Drainage au sol

KW = Kühlwasser Vor-/Rücklauf DN20 (R3/4")  
cooling water IN/OUT DN20 (R3/4")  
Eau à refroidissement marche avant/retour DN20 (R3/4")

Einbringöffnung:  
Entrance dimensions:  
Ouvertures d'accès:

Höhe/Height/Hauteur = ca. 2400mm  
Breite/Width/Largeur = ca. 2000mm

Wandabstand = ca. 900mm  
Wall distance = ca. 900mm  
Distance au mur = ca. 900mm

Technische Änderungen vorbehalten/ Subject to alterations/ Modification sous Réserve